

Intelligent
WAPPLES MS
Web Application Security for the Large Enterprise



Intelligent Web Application Firewall

Intelligent WAPPLES MS Management System

As large enterprises grow and expand, scalability of systems is a priority. Unfortunately, the bigger and more complex a web application security network becomes, the more difficult, time-consuming, and inefficient it can become to manage a multiple WAF configuration. **WAPPLES** and **WAPPLES MS** can eliminate this problem by enabling efficient, centralized WAF management, allowing for remote, centralized management of hundreds of WAF units by a skilled team of security experts.



WAPPLES MS: Pairing Economies of Scale with Economies of Skill

Intelligent

Based upon an intelligent, logic-based analytical engine, instead of a pattern matching system, WAPPLES can detect and block known and unknown attacks.

Efficient

WAPPLES MS allows the management of multiple WAPPLES to be consolidated into one central console, streamlining WAF management for large enterprises while reducing the administrative workload.

WAPPLES Management System

Stable and secure data retention resulting from the storage of all data from the managed units, combined with a self-monitoring 'watchdog' processor, enables WAPPLES MS to perform backup and recovery of WAPPLES security policies.

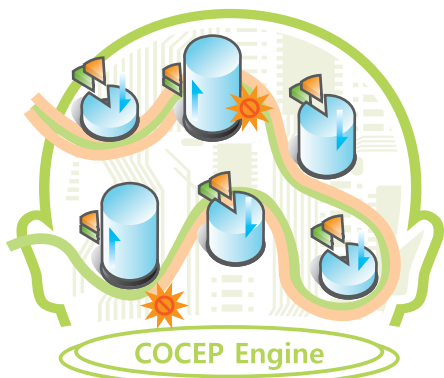
Reliable

The centralized management capabilities of WAPPLES MS allow for scalability of the WAPPLES system when needed, without the potential for a decline in system quality or performance, or a decline in personnel efficiency.

Scalable

WAPPLES MS

- In response to the need for a **secure, reliable, cost-effective, and scalable WAF** with a consolidated management system suitable for large enterprises, Penta Security Systems, Inc. created **WAPPLES**, the third generation WAF, and **WAPPLES MS**, its centralized management system, designed to enable organizations to outsource their WAF management needs from a skilled information security services provider.



- Based on a new concept of web application firewall – one which runs on a **logic analysis based engine** instead of a pattern-matching system – **WAPPLES** detects and blocks known and unknown attacks itself, without administrative involvement, while **WAPPLES MS** offers centralized and streamlined management of multiple WAF units, allowing for service scalability and elasticity.

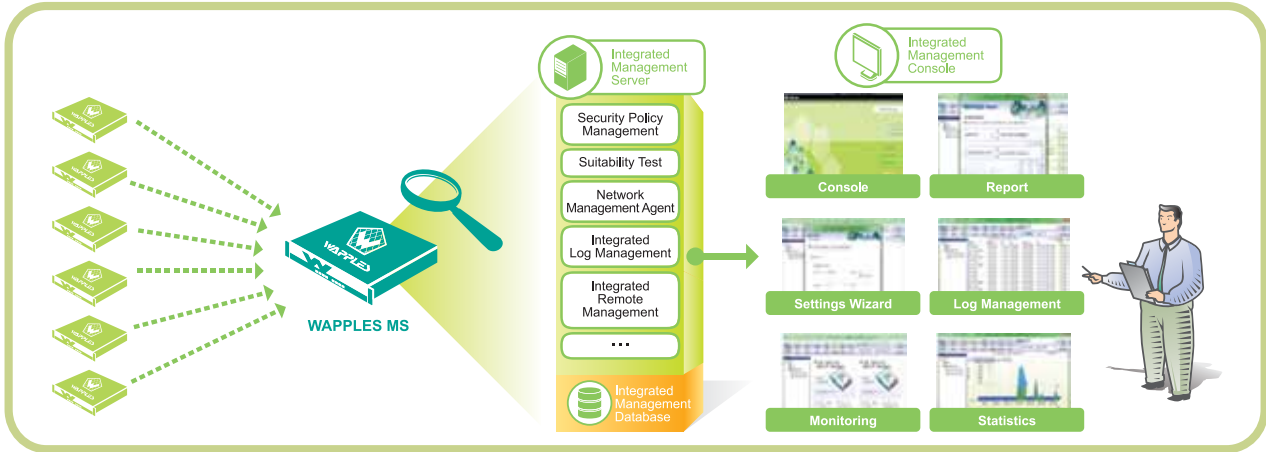
- With over nine years in the web application firewall industry, and over 900 satisfied clients in East Asia, **WAPPLES** and **WAPPLES MS** offer a **tested and proven solution** for satisfying the web application security needs of enterprises of any size.



Intelligent WAPPLES Management System



WAPPLES MS: How does it work?

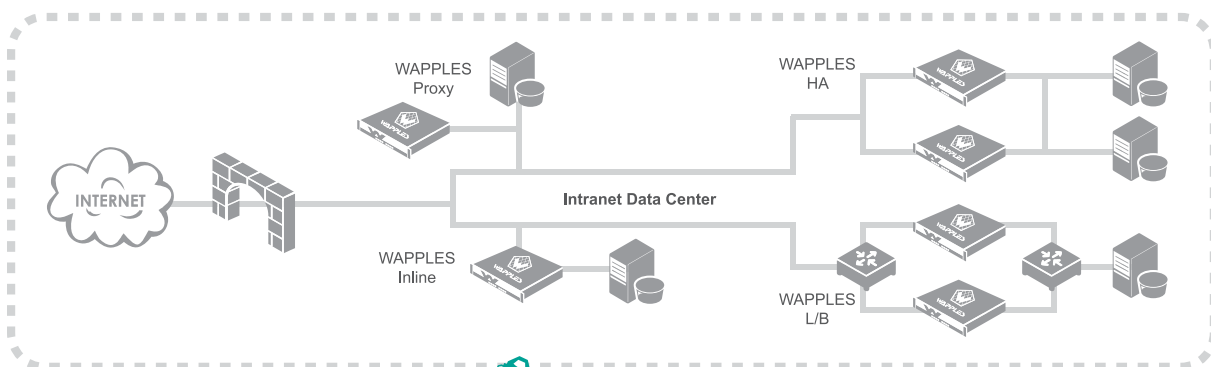


- > The **Integrated Management Server** performs the group management functions such as security policy management, suitability tests, network management, integrated log management, and integrated remote management.
- > The **Integrated Management Database** manages the audit logs, statistics, detection logs, policies, network settings, etc. for integrated group management.
- > The administrator can access WAPPLES MS via the **Integrated Management Console**, which utilizes an intuitive, easy-to-use graphic user interface.
- > WAPPLES MS provides remote control of all WAPPLES units in the system, allowing for convenient group management and real-time synchronization. The WAPPLES MS-500 can manage up to 12 WAPPLES units; the WAPPLES MS-1000 can manage up to 50 WAPPLES units; and the WAPPLES MS-5000 can manage up to approximately 200 WAPPLES units, depending on variable factors such as the size of applications, line speed, transactions, etc.

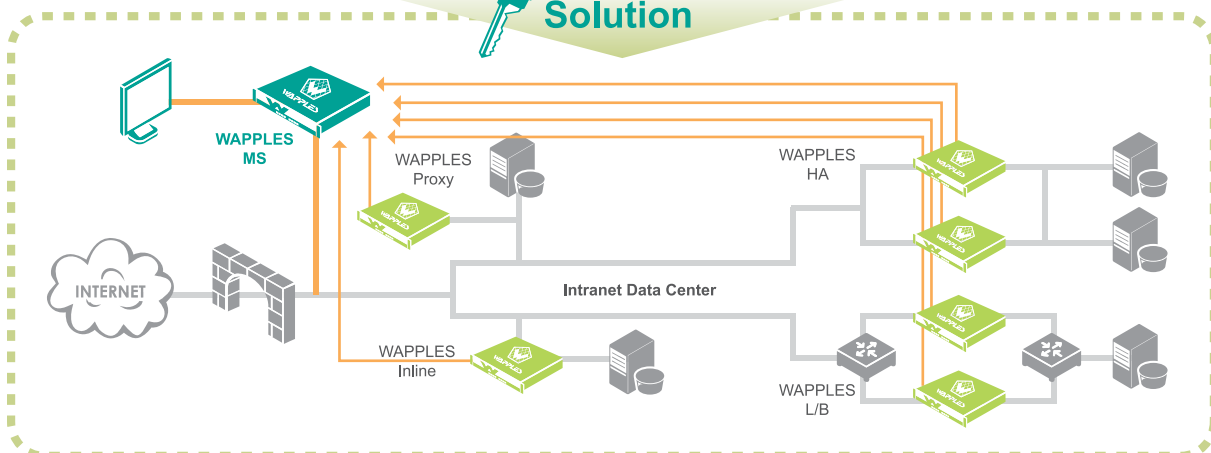
| Class | Value | Performance | High-End |
|---|-------------------------|---|---|
| Model | WAPPLES MS-500 | WAPPLES MS-1000 | WAPPLES MS-5000 |
| Appearance | | | |
| Capacity | | | |
| The recommended number of WAPPLES under control | 12 or less | 50 or less | Approximately 200 |
| Hardware | | | |
| Form Factor | 1U | 2U | 2U |
| CPU | Intel Quad Core 2.66GHz | Intel Quad Core Xeon 2.33GHz * 2 | Intel Westmere 2.53GHz * 2 |
| Memory | 8 GB | 8 GB | 24 GB |
| HDD | 2 TB | 4 TB | 8 TB |
| Dimensions | 443mm/406mm/44.5mm | 443mm/512mm/88mm | 431.8mm/580mm/88mm |
| Weight | 11 Kg | 18.75 Kg | 21 Kg |
| Power Supply | AC100~240V 50/60Hz 300W | AC100~240V 50/60Hz 400W Redundant Power Supply | AC100~240V 50/60Hz 500W Redundant Power Supply |

WAPPLES MS provides:

- Synchronized management of administrator-defined groups of WAPPLES units, including one-click change and synchronization
- Utilities enabling review of incident detection, audit, traffic, and status logs by a selected WAPPLES unit or group
- Varying options for viewing and accessing the dashboards of individual WAPPLES units
- Real time monitoring of the operational status of all managed WAPPLES units by a selected unit or group
- Security policy synchronization
- Stable and secure data retention
- A reporting system offering a variety of customizable reports
- A customizable utility for e-mailing reports, as well as alarm notification
- An easy-to-use GUI
- Rapid deployment



Solution



Intelligent

WAPPLES MS

WAPPLES and WAPPLES MS

Intelligent, Accurate, Efficient, and
Scalable Web Application Security
for the Large Enterprise

PentaSECURITY

Penta Security Systems Inc.

Hanjin Shipping Bldg., 20th Fl. 25-11 Yoido-dong,
Youngdeungpo-ku, Seoul, Korea 150-949
Tel : 02-780-7728 / Fax : 02-786-5281 / www.pentasecurity.com
Any inquiries : 02-2125-6668 / sale@pentasecurity.com

Penta Security Systems K.K.

Akasaka Ascend Bldg 3F, 3-2-8 Akasaka, Minato-ku, Tokyo 107-0052, Japan
TEL: 81-3-5573-8191 FAX: 81-3-5573-8193
Email: japan@pentasecurity.com